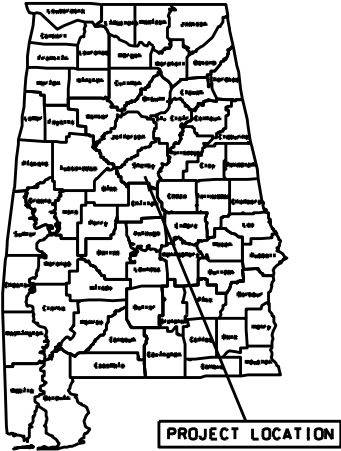


STATE	REFERENCE PROJECT NO	FISCAL YEAR	SHEET NO	LAST SHEET NO
AL	SCP 59-923-21	2021	1	4

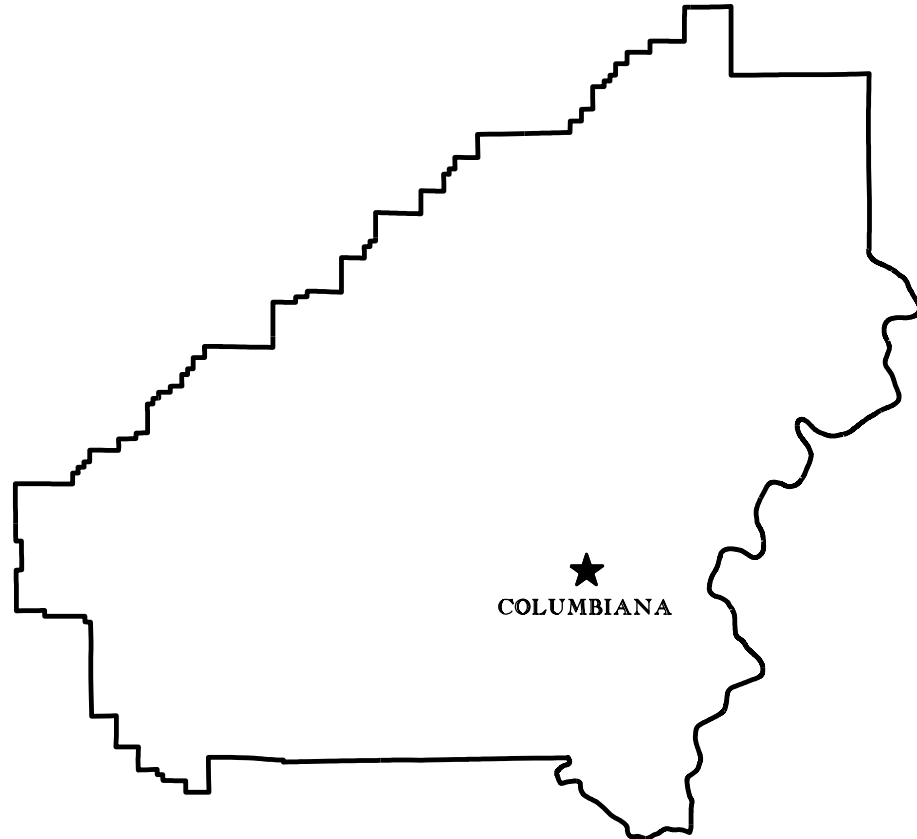
## SHELBY COUNTY HIGHWAY DEPARTMENT

### PLANS OF PROPOSED PROJECT SCP 59-923-21

REPAIR, RESURFACING & TRAFFIC STRIPE FOR VARIOUS COUNTY ROADS



STATE LOCATOR



★  
COLUMBIANA



COUNTY ENGINEER  
**KENNETH R. COLE, P.E.**

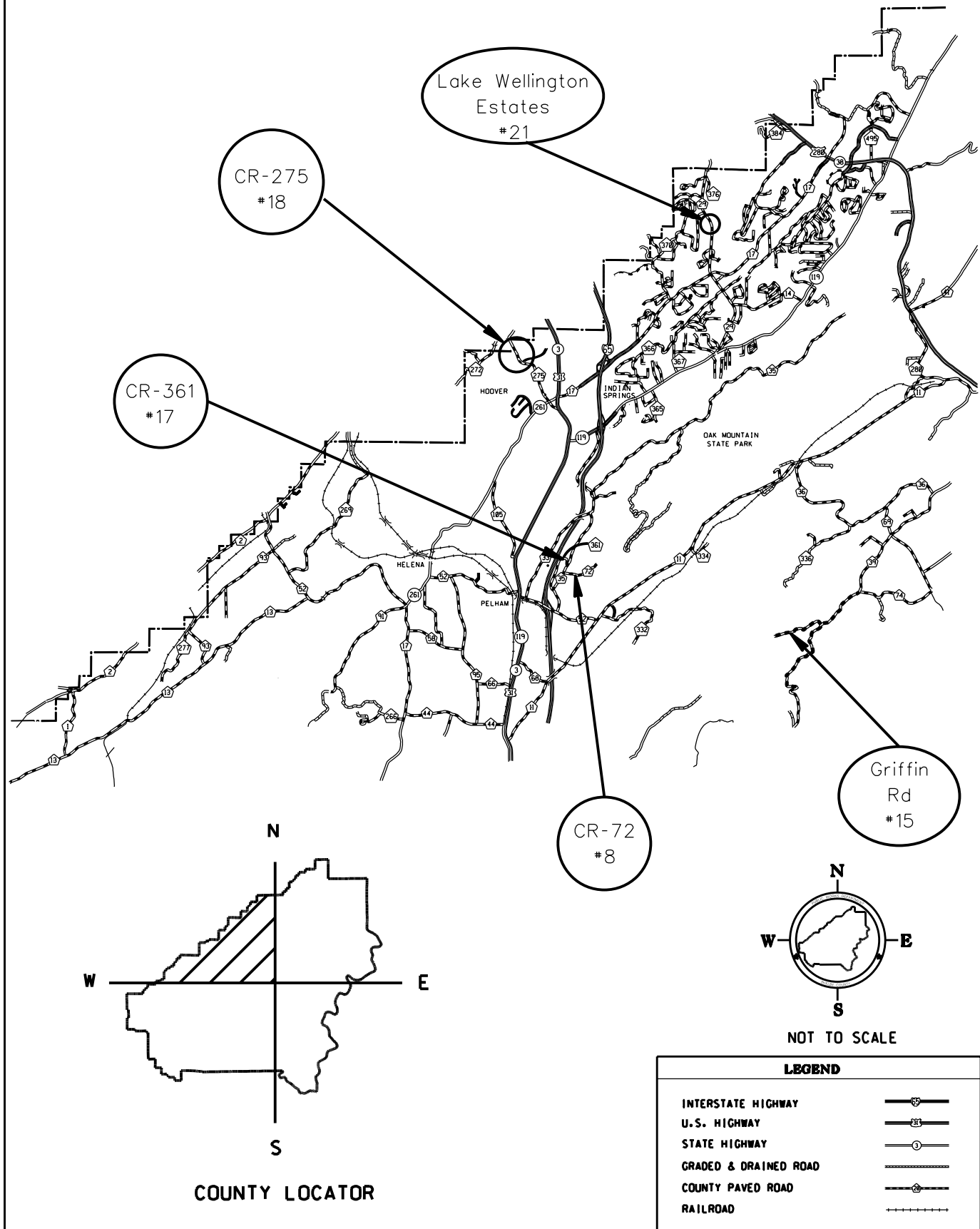
#### COUNTY COMMISSIONERS

DISTRICT #1 <b>KEVIN MORRIS</b>	DISTRICT #2 <b>TOMMY EDWARDS</b>
DISTRICT #3 <b>JON PARKER</b>	DISTRICT #4 <b>WARD WILLIAMS</b>
DISTRICT #5 <b>ELWYN BEARDEN</b>	DISTRICT #6 <b>MIKE VEST</b>
DISTRICT #7 <b>LINDSEY ALLISON</b>	DISTRICT #8 <b>RICK SHEPHERD</b>
DISTRICT #9 <b>DR. ROBBIE HAYES</b>	

NOTE : THESE PLANS HAVE BEEN PREPARED TO  
CONFORM WITH ALABAMA DEPARTMENT  
OF TRANSPORTATION STANDARD  
SPECIFICATIONS DATED 2018.

REFERENCE PROJECT NO	FISCAL YEAR	SHEET NO
SCP 59-923-21	2021	1A

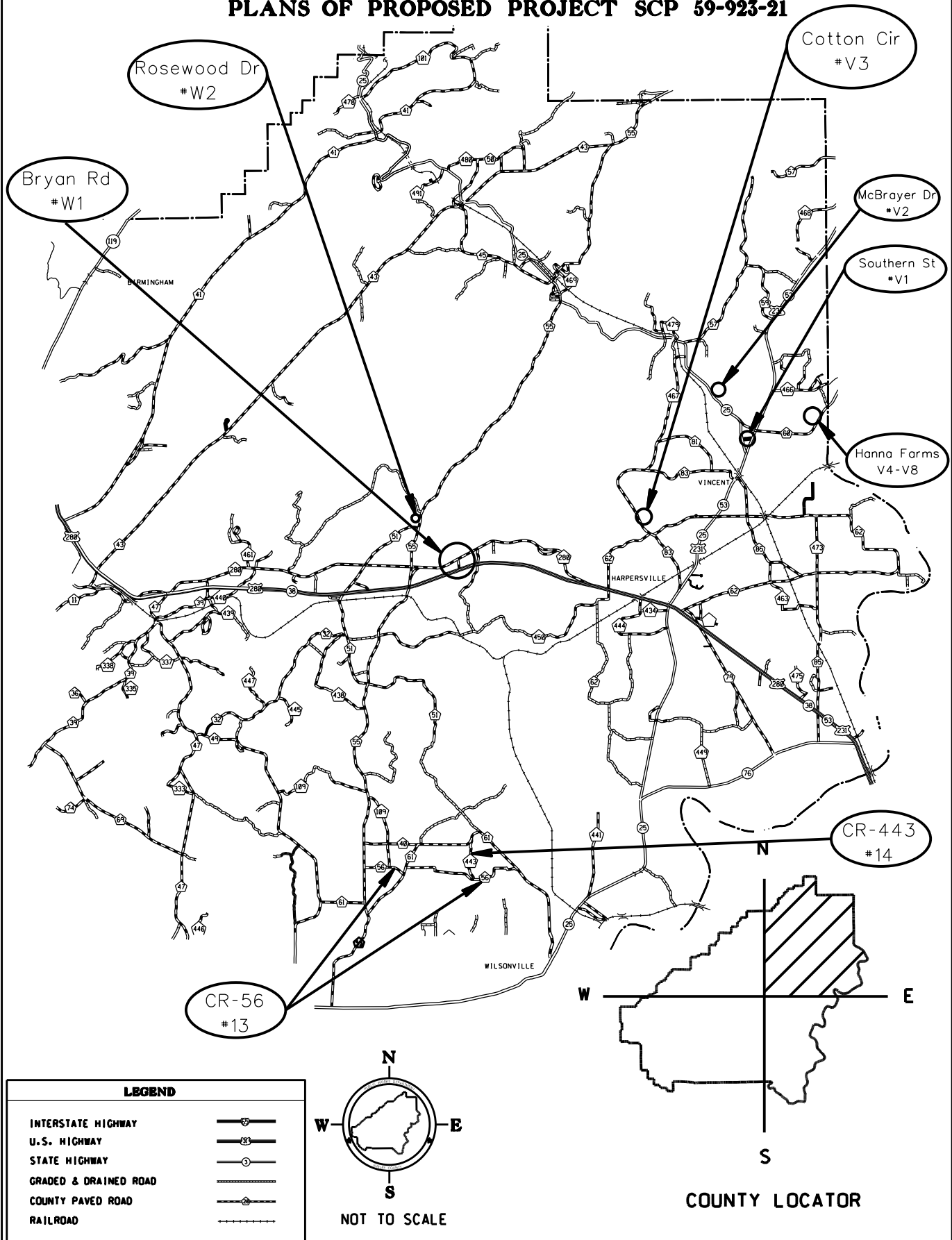
# **PROJECT LOCATIONS** **PLANS OF PROPOSED PROJECT SCP 59-923-21**



REFERENCE PROJECT NO	FISCAL YEAR	SHEET NO
SCP 59-923-21	2021	1B

## PROJECT LOCATIONS

### PLANS OF PROPOSED PROJECT SCP 59-923-21



REFERENCE PROJECT NO

SCP 59-923-21

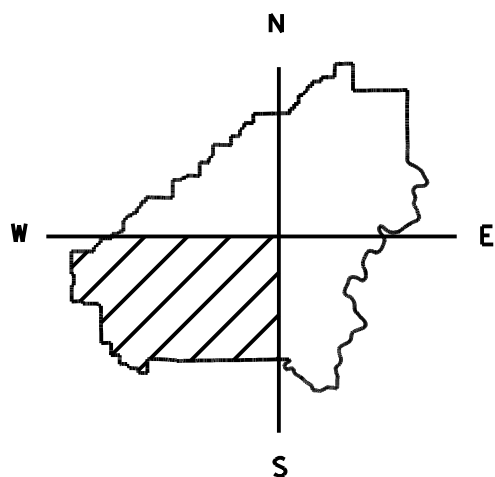
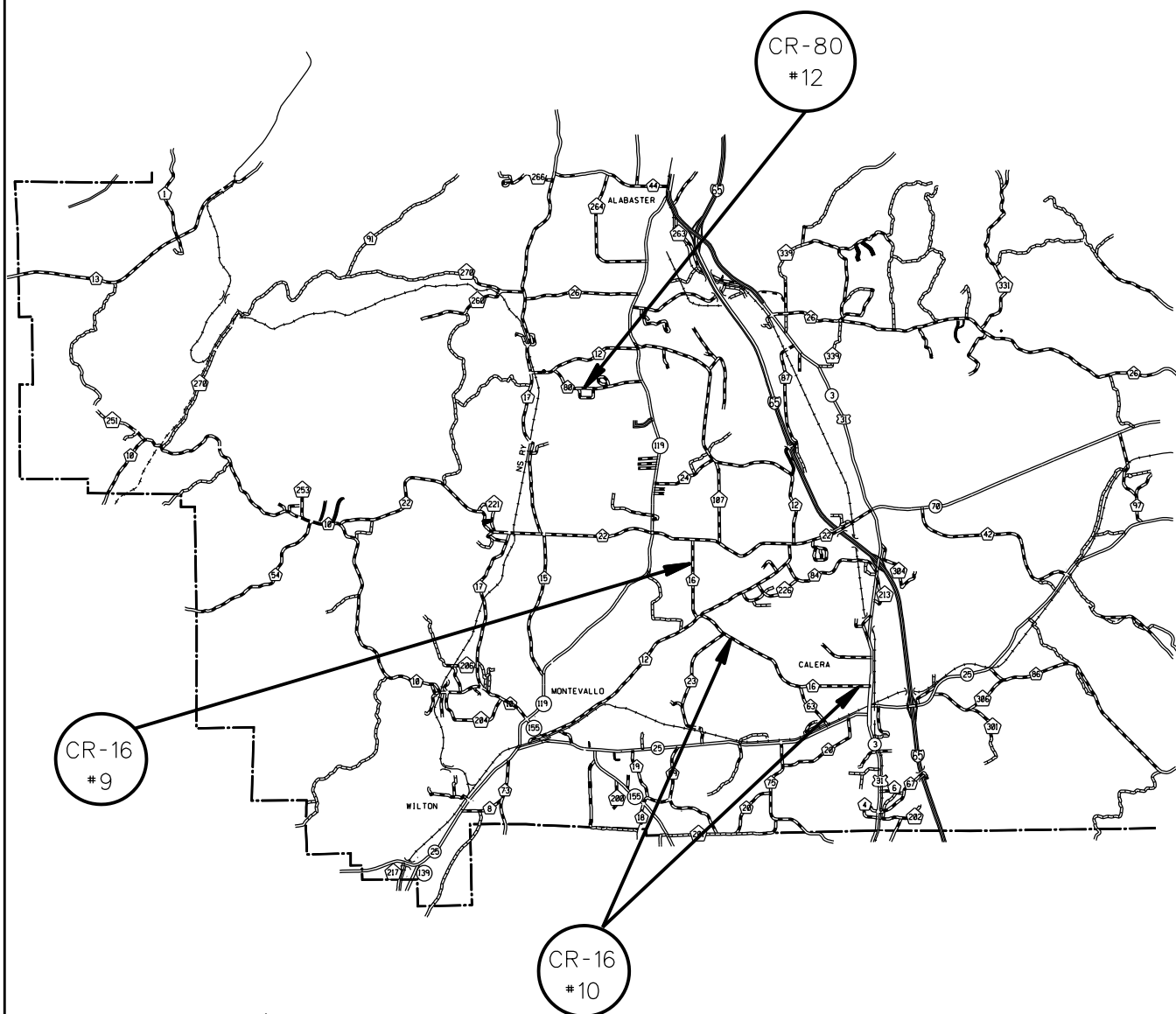
FISCAL YEAR

2021

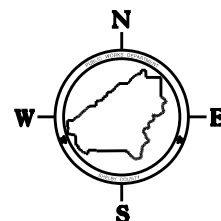
SHEET NO

1C

# **PROJECT LOCATIONS** **PLANS OF PROPOSED PROJECT SCP 59-923-21**



COUNTY LOCATOR



NOT TO SCALE

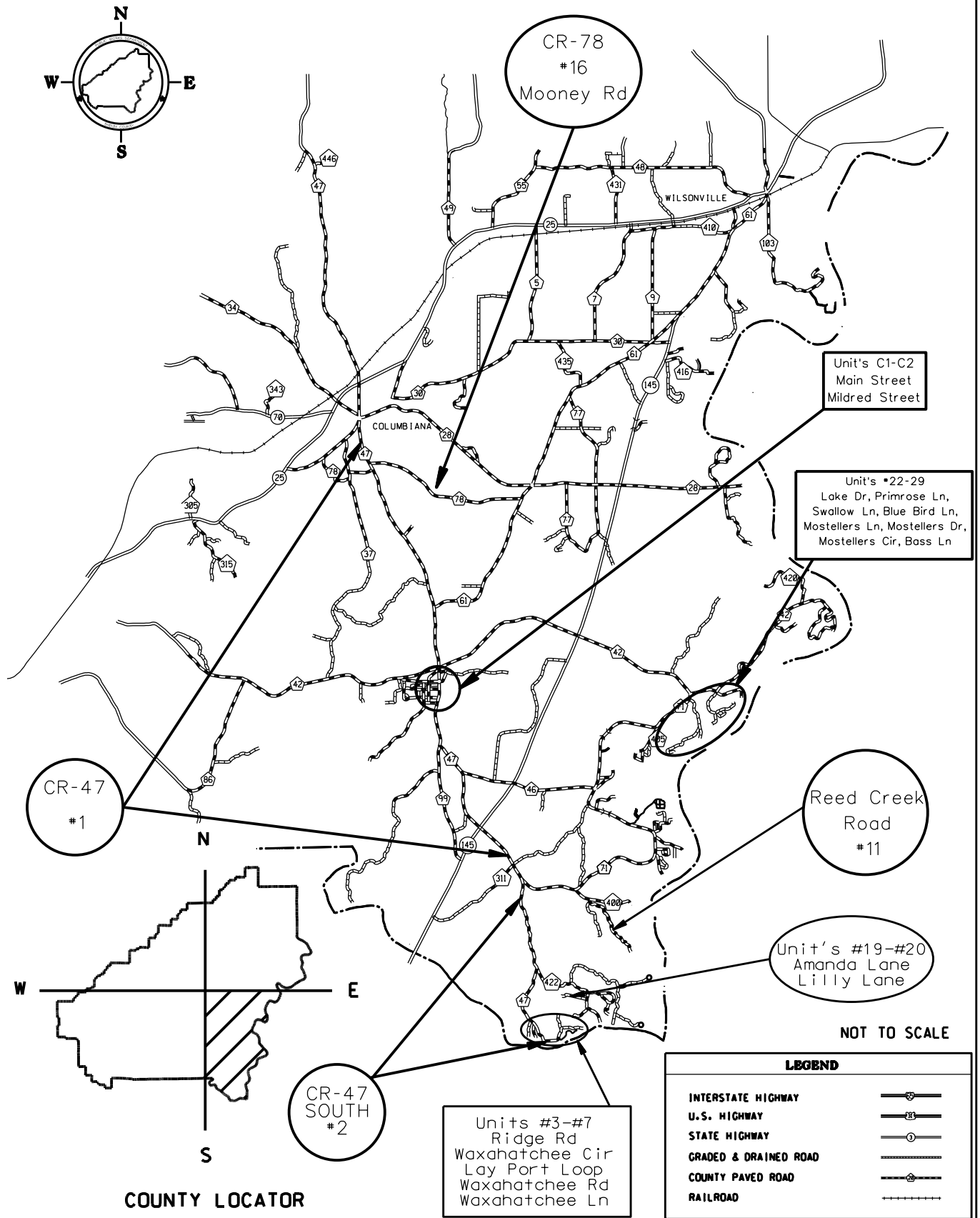
## **LEGEND**

INTERSTATE HIGHWAY	
U.S. HIGHWAY	
STATE HIGHWAY	
GRADED & DRAINED ROAD	
COUNTY PAVED ROAD	
RAILROAD	

REFERENCE PROJECT NO	FISCAL YEAR	SHEET NO
SCP 59-923-21	2021	1D

## PROJECT LOCATIONS

### PLANS OF PROPOSED PROJECT SCP 59-923-21



COUNTY LOCATOR

#### LEGEND

INTERSTATE HIGHWAY	
U.S. HIGHWAY	
STATE HIGHWAY	
GRADED & DRAINED ROAD	
COUNTY PAVED ROAD	
RAILROAD	

REFERENCE PROJECT NO	FISCAL YEAR	SHEET NO
SCP 59-923-21	2021	1E

# INDEX TO SHEETS PROJECT NO. SCP 59-923-21 SHELBY COUNTY

SHEET NO. 1	TITLE SHEET
SHEET NO. 1A-1D	PROJECT LOCATIONS
SHEET NO. 1E	INDEX TO SHEETS
SHEET NO. 2-2E	TYPICAL SECTIONS
SHEET NO. 2F-2G	PROJECT NOTES
SHEET NO. 2H-2J	TRAFFIC CONTROL NOTES
SHEET NO. 3	SUMMARY OF QUANTITIES
SHEET NO. 3A-3C	UNIT DESCRIPTIONS
SHEET NO. 3D-(3-I)	SUMMARY OF QUANTITIES PER UNIT
SHEET NO. 4	TRAFFIC CONTROL PLANS

THE FOLLOWING IS A LIST OF STANDARD OR SPECIAL DRAWINGS CONTAINED IN THE STATE OF ALABAMA HIGHWAY DEPARTMENT SPECIAL AND STANDARD HIGHWAY DRAWINGS BOOKLET DATED 2021 WHICH APPLY TO THIS PROJECT:

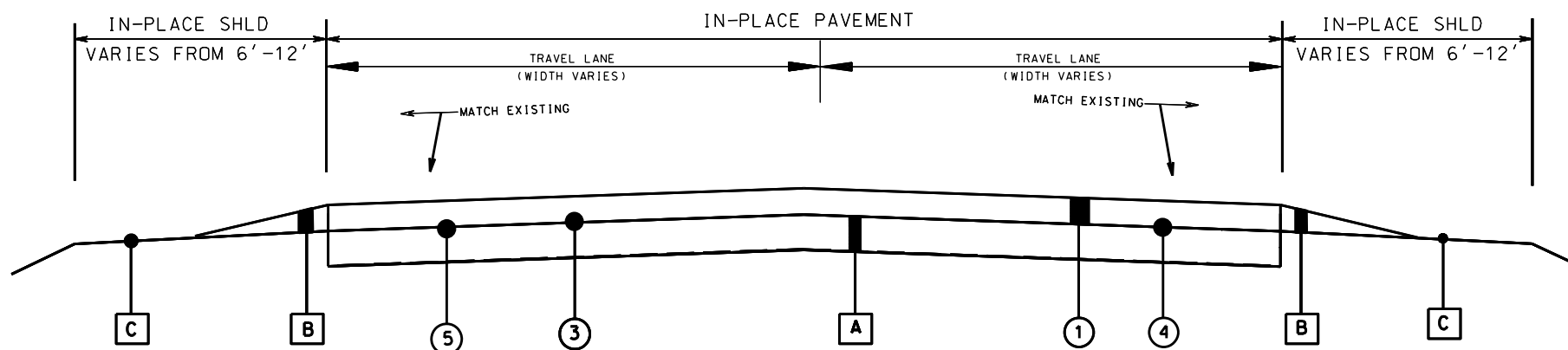
<u>PAGE NO.</u>	<u>DRAWING NO.</u>	<u>DESCRIPTION</u>
68004	TO-107	DETAILS OF INTERSECTION AND TURNOUTS
70104	197-NPL	DETAILS NO PASSING LINES - 2 LANE, TWO DIRECTION ROADWAY
68019	SSEC-1	STANDARD SUPERELEVATION OF CURVES
73504	RRX-107-2	RAILROAD CROSSING ACTIVE WARNING - SIGNS AND PAVEMENT MARKINGS
73507	RRX-107-3	DIMENSIONS FOR RAILROAD CROSSING SIGNS, SIGNALS, AND MARKINGS
70501	PM-705-1	DETAILS OF PAVEMENT MARKERS CLASS A, A-H & B
70504	PM-705-2	DETAILS SHOWING APPLICATION OF PAVEMENT MARKERS
70101	PS-701-6	DETAILS OF TRAFFIC STRIPING FOR TWO LANE HIGHWAYS
74007	TCD-100	DETAILS OF TRAFFIC CHANNELIZATION DEVICES
70301	TCM-703	PAVEMENT LEGENDS & MARKINGS (SHT 1 OF 2)
70302	TCM-703	PAVEMENT LEGENDS & MARKINGS (SHT 2 OF 2)
73030	TSD-730-11	LOOP WIRE INSTALLATION
73036	TSD-730-13	JUNCTION BOX INSTALLATION
71017	IHS-710-12	DETAILS OF ROADWAY SIGN POSTS (SMALL CHANNEL AND TUBULAR SECTION)
71032	IHS-710-21	DETAILS OF LOCATION AND MOUNTING STANDARD FLAT PANEL SIGNS ON U-CHANNEL AND TUBULAR POSTS
71092	SHS-28	STANDARD HIGHWAY SIGNS
71093	SHS-29	STANDARD HIGHWAY SIGNS
71094	SHS-30	STANDARD HIGHWAY SIGNS
71095	SHS-31	STANDARD HIGHWAY SIGNS
74007	TCD-100	DETAILS FOR TRAFFIC CHANNELIZATION DEVICES

PROJECT NOTES: 201.202.203.204.205.206.  
207.213.214.215.216.218.  
220.223.224

TYPICAL SECTION  
PROJECT NO. SCP 59-923-21  
SHELBY COUNTY

PROJECT NUMBER	FISCAL YEAR	SHEET NO.	LAST SHEET
SCP 59-923-21	2021	2	4

TYPICAL SECTION APPLIES TO COUNTY ROADS THAT  
SPECIFY "G" TREATMENT (EXCEPT UNIT #1: CR-47)



LEGEND

ITEM	UNIT	DESCRIPTION
① 424A-361	TON	REQ'D SUPERPAVE BITUMINOUS CONCRETE WEARING SURFACE LAYER, 3/4" MAXIMUM AGGREGATE SIZE MIX, ESAL RANGE C/D (185 LBS/SY)
③ 401B-111	SQ YD	REQ'D BITUMINOUS TREATMENT G, CRS-2 (WITH POLYMER ADDITIVE)
④ 424B-656	TON	REQ'D SUPERPAVE BITUMINOUS CONCRETE UPPER BINDER LAYER, PATCHING, 1 1/2" MAXIMUM AGGREGATE SIZE MIX, ESAL RANGE C/D (440 LBS/SY)
⑤ 424B-658	TON	REQ'D SUPERPAVE BITUMINOUS CONCRETE UPPER BINDER LAYER, LEVELING, 3/4" MAXIMUM AGGREGATE SIZE MIX, ESAL RANGE C/D (165 LBS/SY)
A		IN-PLACE PAVEMENT (RETAIN)
B		SHOULDER WORK TO BE PERFORMED BY SHELBY COUNTY
C		IN-PLACE SHOULDER (RETAIN)

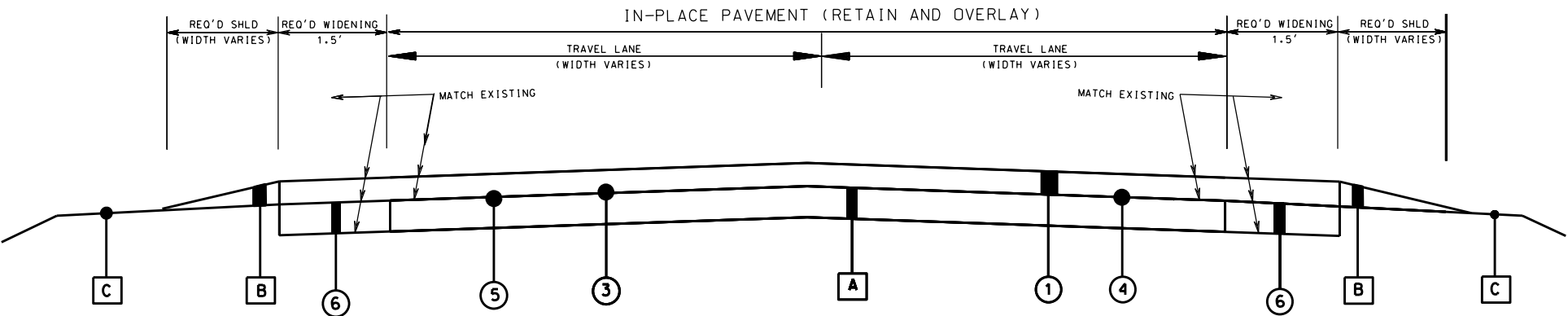
NOT TO SCALE

PROJECT NOTES: 201,204,205,206,207,  
213,217,223,225,226

TYPICAL SECTION  
PROJECT NO. SCP 59-923-21  
SHELBY COUNTY

PROJECT NUMBER	FISCAL YEAR	SHEET NO.	LAST SHEET
SCP 59-923-21	2021	2A	4

TYPICAL SECTION APPLIES TO UNIT #1: CR-47



LEGEND

ITEM	UNIT	DESCRIPTION
① 424A-361	TON	REQ'D SUPERPAVE BITUMINOUS CONCRETE WEARING SURFACE LAYER, 3/4" MAXIMUM AGGREGATE SIZE MIX, ESAL RANGE C/D (185 LBS/SY)
③ 401B-111	SO YD	REQ'D BITUMINOUS TREATMENT G, CRS-2 (WITH POLYMER ADDITIVE)
④ 424B-656	TON	REQ'D SUPERPAVE BITUMINOUS CONCRETE UPPER BINDER LAYER, PATCHING, 1 1/2" MAXIMUM AGGREGATE SIZE MIX, ESAL RANGE C/D (440 LBS/SY)
⑤ 424B-658	TON	REQ'D SUPERPAVE BITUMINOUS CONCRETE UPPER BINDER LAYER, LEVELING, 3/4" MAXIMUM AGGREGATE SIZE MIX, ESAL RANGE C/D (82 LBS/SY - 150 LBS/SY)
⑥ 327D-021	TON	PLANT MIX BITUMINOUS BASE, WIDENING, MIX 2 (432 LBS/SY) (MAY BE PLACED IN ONE LAYER)
A		IN-PLACE PAVEMENT (RETAIN)
B		SHOULDER WORK TO BE PERFORMED BY SHELBY COUNTY
C		IN-PLACE SHOULDER (RETAIN)

NOT TO SCALE

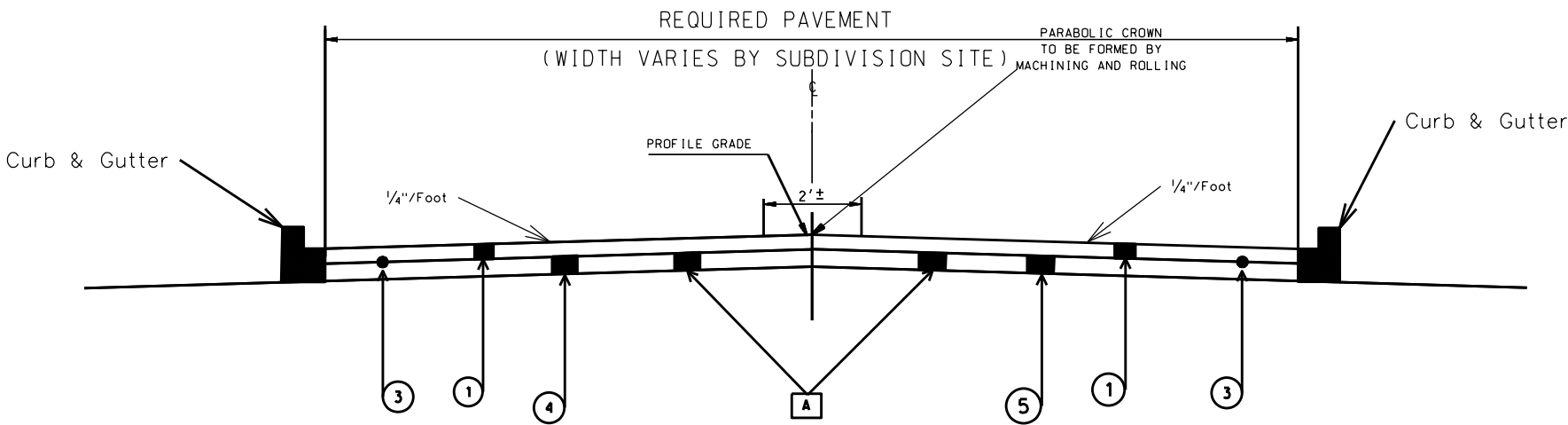


PROJECT NOTES: 201,204,205,206,207,  
213,217

TYPICAL SECTION  
PROJECT NO. SCP 59-923-21  
SHELBY COUNTY

PROJECT NUMBER	FISCAL YEAR	SHEET NO.	LAST SHEET
SCP 59-923-21	2021	28	4

TYPICAL SECTION APPLIES TO UNIT #21: LAKE WELLINGTON ESTATES  
REPAIRS, "G" TREATMENT AND SEAL LAYER



LEGEND

TYPICAL SECTION UNIT #21  
PLANING EXISTING, & WEARING SURFACE FOR SUBDIVISIONS

ITEM	UNIT	DESCRIPTION
① 424A-340	TON	REQ'D SUPERPAVE BITUMINOUS CONCRETE WEARING SURFACE LAYER, 1/2" MAXIMUM AGGREGATE SIZE MIX, ESAL RANGE A/B (125 LBS/SY)
③ 401B-111	SQ YD	REQ'D BITUMINOUS TREATMENT G, CRS-2 (WITH POLYMER ADDITIVE)
④ 424B-656	TON	REQ'D SUPERPAVE BITUMINOUS CONCRETE UPPER BINDER LAYER, PATCHING, 1 1/2" MAXIMUM AGGREGATE SIZE MIX, ESAL RANGE C/D (440 LBS/SY)
⑤ 424B-658	TON	REQ'D SUPERPAVE BITUMINOUS CONCRETE UPPER BINDER LAYER, LEVELING, 3/4" MAXIMUM AGGREGATE SIZE MIX, ESAL RANGE C/D (82 LBS/SY - 150 LBS/SY)

A IN PLACE PAVEMENT (RETAIN)

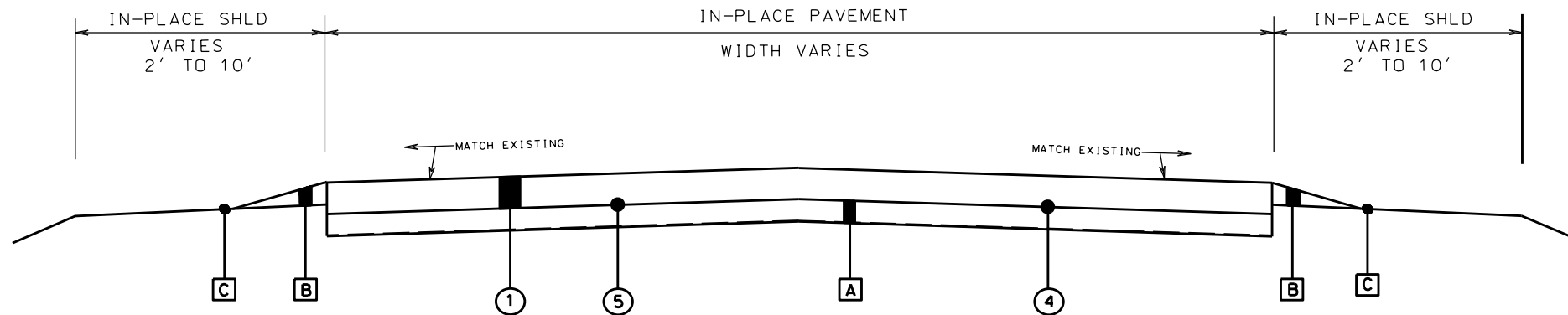
PROJECT NOTES: 201.202.203.204.205.206.  
207.210.211.213.215.216.  
217.218.220.222.223.224

TYPICAL SECTION  
PROJECT NO. SCP 59-923-21  
SHELBY COUNTY

PROJECT NUMBER	FISCAL YEAR	SHEET NO.	LAST SHEET
SCP 59-923-21	2021	2C	4

THIS TYPICAL SECTION IS FOR UNITS 22-29: ALABAMA POWER COTTAGES

NO CURB AND GUTTER



LEGEND

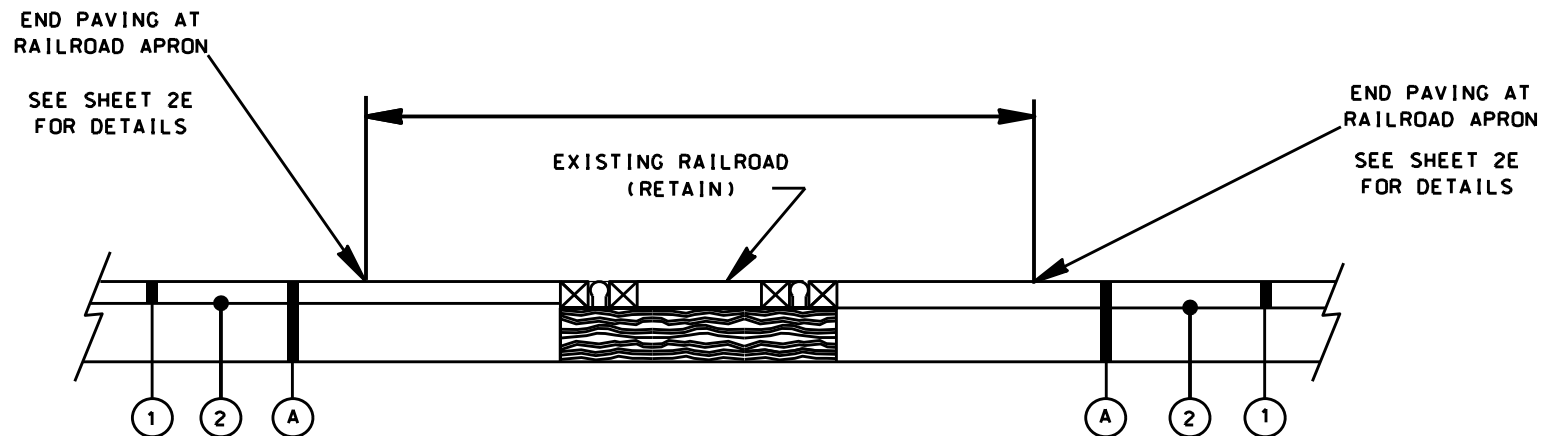
ITEM	UNIT	DESCRIPTION
① 424A-361	TON	REQ'D SUPERPAVE BITUMINOUS CONCRETE WEARING SURFACE LAYER, $\frac{3}{4}$ " MAXIMUM AGGREGATE SIZE MIX, ESAL RANGE C/D (185 LBS/SY)
④ 424B-656	TON	REQ'D SUPERPAVE BITUMINOUS CONCRETE UPPER BINDER LAYER, PATCHING, $1\frac{1}{2}$ " MAXIMUM AGGREGATE SIZE MIX, ESAL RANGE C/D (440 LBS/SY)
⑤ 424B-658	TON	REQ'D SUPERPAVE BITUMINOUS CONCRETE UPPER BINDER LAYER, LEVELING, $\frac{3}{4}$ " MAXIMUM AGGREGATE SIZE MIX, ESAL RANGE C/D (82 LBS/SY - 150 LBS/SY)
A		IN-PLACE PAVEMENT (RETAIN)
B		SHOULDER WORK (PERFORMED BY SHELBY COUNTY)
C		IN-PLACE SHOULDER (RETAIN)

NOT TO SCALE

TYPICAL SECTION  
PROJECT NO. SCP 59-923-21  
SHELBY COUNTY

PROJECT NUMBER	FISCAL YEAR	SHEET NO.	LAST SHEET
SCP 59-923-21	2021	20	4

SKETCH SHOWING RESURFACING AT RAILROAD CROSSING



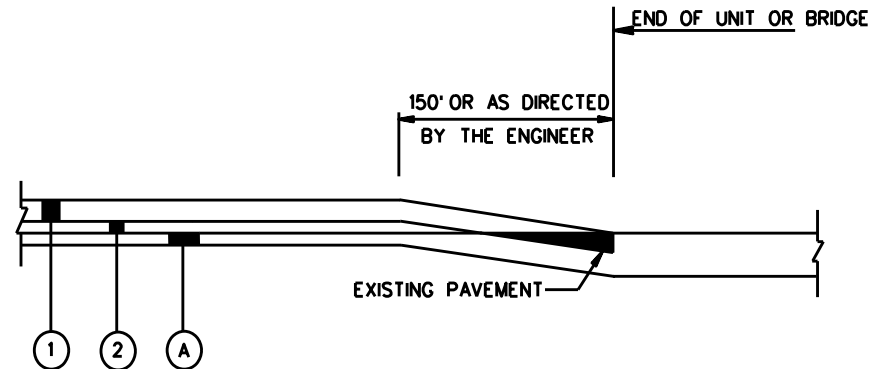
LEGEND

ITEM	UNIT	DESCRIPTION
① 424A-361	TON	REQ'D SUPERPAVE BITUMINOUS CONCRETE WEARING SURFACE LAYER, 3/4" MAXIMUM AGGREGATE SIZE MIX, ESAL RANGE C/D (185 LBS/SY)
② 408A-052	SO YD	REQ'D PLANING EXISTING PAVEMENT, (APPROXIMATELY 1.10" THRU 2.0" THICK)
Ⓐ		IN-PLACE PAVEMENT RETAIN

NOT TO SCALE

TYPICAL SECTION  
PROJECT NO. SCP 59-923-21  
SHELBY COUNTY

PROJECT NUMBER	FISCAL YEAR	SHEET NO.	LAST SHEET
SCP 59-923-21	2021	2E	4



SKETCH SHOWING PAVEMENT TIE AT BEGIN/END OF UNIT,  
AT BRIDGE ENDS AND RR/XING

EXISTING PAVEMENT TO BE REMOVED IN A SUFFICIENT  
AMOUNT TO ALLOW FOR FULL DEPTH OVERLAY. THIS  
WORK TO BE A SUBSIDIARY OBLIGATION OF ITEM 424A-361  
AS DIRECTED BY THE ENGINEER

LEGEND

ITEM	UNIT	DESCRIPTION
① 424A-361	TON	REQ'D SUPERPAVE BITUMINOUS CONCRETE WEARING SURFACE LAYER, $\frac{3}{4}$ " MAXIMUM AGGREGATE SIZE MIX. ESAL RANGE C/D (SEE SHEET 3A FOR APPLICATION RATES)
② 408A-052	SQ YD	REQ'D PLANING EXISTING PAVEMENT (APPROXIMATELY 1.10" THRU 2.0" THICK) (PLANE APPROXIMATELY 1.50" )
Ⓐ		IN-PLACE PAVEMENT (PLANE AS REQUIRED)

NOT TO SCALE

REFERENCE PROJECT NO	FISCAL YEAR	SHEET NO
SCP 59-923-21	2021	2F

**PROJECT NOTES**  
**PROJECT NO. SCP 59-923-21**  
**SHELBY COUNTY**

- 201: THE MINIMUM REQUIREMENTS FOR PAVING OF TURNOUTS SHALL BE AS FOLLOWS, UNLESS OTHERWISE DIRECTED BY THE ENGINEER:
- a. CITY STREETS, COUNTY ROADS AND STATE HIGHWAYS--PAVE TO THE BACK OF RADIUS WITH JOINTS MILLED BY MILLING MACHINE FULL WIDTH AS DESIGNATED BY PROJECT ENGINEER.
  - b. BUSINESS DRIVEWAYS--PAVE TO THE BACK OF THE EXISTING SHOULDER.
  - c. ALL OTHER TURNOUTS--PAVE A MINIMUM OF 3'.
  - d. PARTICULAR ATTENTION WILL BE GIVEN TO THE SLOPE OF ALL DRIVES EITHER RESIDENTIAL OR COMMERCIAL TO ASSURE EASY PASSAGE ON AND OFF THE ROADWAY. IT WILL BE THE RESPONSIBILITY OF THE CONTRACTOR TO EITHER MAKE NECESSARY ADJUSTMENTS DURING ONGOING PHASES OF PAVING OPERATION OR ADJUST AT A LATER DATE AS DIRECTED BY THE PROJECT ENGINEER.
- 202: RESURFACING OVERLAYS SHALL MATCH EXISTING SUPERELEVATION OF HORIZONTAL CURVE.
- 203: ALL SHOULDERS ON ALL UNITS SHALL BE CLIPPED AND BROOMED TO THE ENGINEER'S SATISFACTION PRIOR TO ANY AND ALL RESURFACING.
- 204: ALL EXCESS STONE WILL BE THE RESPONSIBILITY OF THE CONTRACTOR TO REMOVE FROM INTERSECTIONS, PARKING LOTS, DRIVEWAYS, AND ALL PUBLIC PROPERTIES. ALL EXCESS STONE SHALL BE REMOVED DAILY, UNLESS OTHERWISE DIRECTED BY THE PROJECT ENGINEER.
- 205: ALL TRUCK LOAD LIMITS SHALL BE IN ACCORDANCE WITH SHELBY COUNTY, TRUCK WEIGHT ORDINANCE (9 TONS PER AXLE).
- 206: ITEM 424B-658, BITUMINOUS CONCRETE PLANT MIX, LEVELING  $\frac{3}{4}$ " MAX ESAL C/D SHALL BE APPLIED AS DIRECTED BY THE PROJECT ENGINEER.
- 207: CONTRACTOR SHALL TIE BEGINNING AND ENDING OF PROJECT AND AT BRIDGE CROSSINGS AS SHOWN IN THE SKETCH ON SHEET 2E.
- 208: MOBILIZATION AND CONSTRUCTION FUEL SHALL BE SUBSIDIARY OBLIGATION OF THE CONTRACT.
- 209: EXCESS MATERIAL THAT CANNOT BE USED TO FLUSH SLOPES WITHIN A PROJECT AREA SHALL BE WASTED AS DIRECTED BY THE PROJECT ENGINEER.
- 210: CONTRACTOR IS ULTIMATELY RESPONSIBLE FOR THE CONTINUOUS AND PROPER OPERATION OF ALL EXISTING UTILITIES. THE COUNTY ENGINEER SHALL COORDINATE RELOCATION OF UTILITIES WITH THE AFFECTED UTILITY COMPANIES.
- 211: CONTRACTOR IS RESPONSIBLE FOR MAKING CONTACT WITH LOCAL WATER AUTHORITIES AND OBTAINING PERMISSION OR A METER WITH WHICH TO ACQUIRE WATER FOR USE DURING THE PROJECT.
- 212: BASE LAYER COMPACTION SHALL MEET 100% OF THE MAXIMUM THEORETICAL DENSITY OF THE MATERIAL SPECIFIED TO THE SATISFACTION OF THE COUNTY ENGINEER.

REFERENCE PROJECT NO	FISCAL YEAR	SHEET NO
SCP 59-923-21	2021	20

**PROJECT NOTES**  
**PROJECT NO. SCP 59-923-21**  
**SHELBY COUNTY**

- 213: ITEM 405A-000 SHALL BE MECHANICALLY APPLIED TO ACHIEVE UNIFORM DISTRIBUTION. HAND APPLICATION WILL BE ALLOWED ONLY ON TURNOUTS AND INTERSECTIONS.
- 214: ANY ROADWAYS WITH A TOTAL WIDTH OF LESS THAN 20' SHALL BE PAVED USING A MATERIAL STRIKE OFF PLATE.
- 215: NO SECTION OF PAVEMENT WILL BE LEFT OVERNIGHT WITHOUT TRAFFIC STRIPING OR RAILROAD MARKINGS BEING IN PLACE. THIS INCLUDES BITUMINOUS TREATMENT "G" AND FINAL WEARING LAYER.
- 216: IT SHALL BE THE CONTRACTOR'S RESPONSIBILITY TO INVENTORY ALL IN-PLACE STRIPING, MARKINGS AND LEGENDS AND REFERENCE THE LOCATIONS, SO THAT ALL REQUIRED STRIPING, MARKINGS AND LEGENDS SHALL BE PLACED BACK IN THE SAME LOCATIONS AS THEY WERE BEFORE RESURFACING OPERATIONS BEGAN. THE WORK INVOLVED IN INVENTORYING AND REFERENCING SHALL BE A SUBSIDIARY OBLIGATION OF ITEM 701A-230. IF IN-PLACE STRIPING, MARKINGS AND LEGENDS DIFFER FROM REQUIREMENTS ON STANDARD DRAWINGS OR MUTCD, THE PROJECT ENGINEER SHALL BE NOTIFIED BEFORE WORK BEGINS.
- 217: ALL PATCHING SHALL BE IN ACCORDANCE WITH ITEM 410.03(c) AND SUBARTICLE 410.09(d) AND COMPLETED PRIOR TO RESURFACING. PATCHES SHALL BE A MINIMUM WIDTH OF 7'-0" AND MINIMUM DEPTH OF 4". THE EXACT LACATION, WIDTH, LENGTH AND DEPTH SHALL BE DETERMINED BY THE ENGINEER.
- 218: IF A DROP OFF OCCURS IN A TRANSVERSE DIRECTION DURING THE CONSTRUCTION OF THIS PROJECT, THE CONTRACTOR SHALL CONSTRUCT A TEMPORARY BITUMINOUS WEDGE AS DIRECTED BY THE ENGINEER. THE WORK, IF REQUIRED, SHALL BE PAID FOR AS ITEM 424A-340 OR 424A-361 DEPENDING UPON LOCATION OF WEDGE.
- 219: TEMPORARY TRAFFIC CONTROL MAKINGS SHALL BE USED FOR STOP LINES ONLY. 4 INCH TEMPORARY STRIPE SHALL BE USED FOR A TEMPORARY CHANNELIZING STRIPE AS DIRECTED BY THE ENGINEER.
- 220: ANY DAMAGE TO IN-PLACE PAVING, CURB AND GUTTER, SIDEWALK, GRASSING ETC. SHALL BE REPAIRED BY THE CONTRACTOR TO THE SATISFACTION OF THE ENGINEER AT NO COST TO THE PROJECT.
- 221: FOR UNIT \*18 THERE SHALL BE NO LANE CLOSURES ALLOWED BETWEEN THE HOURS OF 7:00-9:00 AM OR 4:00-6:00 PM UNLESS OTHERWISE DIRECTED BY THE PROJECT ENGINEER.
- 222: THE PRIME CONTRACTOR SHALL INSTALL A MINIMUM OF 70% OF THE TOTAL TONNAGE REQUIRED FOR ITEMS 424A-340 AND 424A-361 UNLESS OTHERWISE APPROVED BY THE SHELBY COUNTY ENGINEER.
- 223: ALL FINAL STRIPING SHALL BE INSTALLED WITH A SHELBY COUNTY INSPECTOR ON SITE.
- 224: UNIT \*18 SHOULD BE CONSIDERED FOR POSSIBLE NIGHT WORK DUE TO TRAFFIC VOLUMES. ALL EXTRA SIGNS, LIGHTS, OFF DUTY POLICE OR EXTRAS NEEDED FOR WORKING AT NIGHT SHALL BE THE RESPONSIBILITY OF THE CONTRACTOR AND WILL BE A SUBSIDIARY OF THE CONTRACT.
- 225: WHERE EXISTING PAVEMENT IS TO BE WIDENED 1½-2 FEET INTO THE IN-PLACE UNPAVED SHOULDER, THE REMOVED SHOULDER MATERIAL SHALL BE USED TO DRESS AND CONFORM TO THE IN-PLACE SHOULDER SLOPES/FRONT SLOPES. THE COST OF THIS WORK SHALL BE SUBSIDIARY TO PAY ITEM 327D-021.

REFERENCE PROJECT NO	FISCAL YEAR	SHEET NO
SCP 59-923-21	2021	2H

**PROJECT NOTES**  
**PROJECT NO. SCP 59-923-21**  
**SHELBY COUNTY**

226: 460 TONS OF ITEM 327D-021, WIDENING HAS BEEN SET UP TO WIDEN CR-47 BETWEEN SR-145 AND CR-71, 1.5' ON BOTH SIDES OF ROADWAY.

226a: WIDENING OPERATIONS SHALL BE LIMITED TO ONE SIDE OF THE ROAD AT A TIME.

226b: CONTRACTOR SHALL SCHEDULE HIS WORK WHERE CUTTING OUT OF THE SHOULDERS DOES NOT EXCEED THE AMOUNT OF WIDENING COMPLETED EACH DAY.

226c: ROADBED PROCESSING IS WAIVED IN WIDENING AREAS AND AT UNPAVED INTERSECTING ROADS AND TURNOUTS. SUBGRADE TO BE COMPACTED TO THE SATISFACTION OF THE ENGINEER. COST TO BE A SUBSIDIARY OBLIGATION OF ITEM 327D-021.

226d: CONTRACTOR SHALL DRESS SHOULDERS TO THE EDGE OF WIDENING TO PREVENT DROP-OFFS IN EXCESS OF 2 INCHES AFTER EACH DAY'S PAVING IS COMPLETE. COST TO BE A SUBSIDIARY OBLIGATION OF ITEM 327D-021.

226e: DURING THE WIDENING PROCESS ALL DRIVEWAYS, ENTRANCES TO BUSINESSES, AND IN FRONT OF MAIL BOXES SHALL BE KEPT ACCESSIBLE AT ALL TIMES.

226f: CONTRACTOR SHALL PROVIDE ALL NECESSARY EQUIPMENT TO PERFORM THE WIDENING OPERATION.

226g: ALL EXISTING CONCRETE DRIVEWAYS WITHIN THE AREA OF REQUIRED WIDENING MUST BE SAWED, REMOVED ON NEAT LINES & DISPOSED OF SO THAT THE REQUIRED WIDENING CAN BE CONSTRUCTED.

227: DUE TO WORK THAT WILL HAVE TO BE DONE TO THE CROSS DRAIN PIPES ALONG UNITS \*10: CR-16 AND UNIT\*16; CR-78 (MOONEY RD) THE COUNTY WANTS TO HOLD OFF ON ANY WORK BEING DONE TO THESE UNITS UNTIL THE LATER PART OF THE CONTRACT TO ALLOW FOR ANY SETTLING OF AREAS WHERE ROADBED IS DISTURBED.

228: THE CONTRACTOR SHALL COMPLETE THE ENTIRE PROJECT BY OCTOBER 15, 2021.

REFERENCE PROJECT NO	FISCAL YEAR	SHEET NO
SCP 59-923-21	2021	2-1

**TRAFFIC CONTROL NOTES**  
**PROJECT NO. SCP 59-923-21**  
**SHELBY COUNTY**

700. THE TRAFFIC CONTROL PLAN IS DEVELOPED IN CONFORMANCE WITH THE MANUAL ON UNIFORM TRAFFIC CONTROL DEVICES PART 6, 2009 EDITION. THE TRAFFIC CONTROL DEVICES INDICATED REPRESENT CONDITIONS KNOWN DURING PLAN DEVELOPMENT. IN THE EVENT ACTUAL PHYSICAL CONDITIONS WARRANT ADDITIONAL TRAFFIC CONTROL DEVICES, THEY SHALL BE INSTALLED IN CONFORMANCE WITH THE MUTCD PART 6 AS DIRECTED BY THE ENGINEER. COST SHALL BE PAID FOR AS A SUBSIDIARY OBLIGATION.
701. THE CONTRACTOR WILL BE PERMITTED TO DEVELOP HIS OWN TRAFFIC CONTROL PLAN TO BE USED IN LIEU OF THIS TRAFFIC CONTROL PLAN IF APPROVED BY THE ENGINEER. A CONTRACTOR DEVELOPED TRAFFIC CONTROL PLAN SHALL BE A SUBSIDIARY COST OF THE CONTRACT.
702. THE CONTRACTOR WILL ENSURE THAT ALL TRAFFIC CONTROL DEVICES ARE IN PROPER LOCATIONS AND IN GOOD CONDITION AT ALL TIMES.
703. ALL SIGNS AND BARRICADES MAY BE ADJUSTED BY THE ENGINEER FOR THE SAFETY OF THE TRAVELING PUBLIC WHEN NECESSARY.
704. ADDITIONAL SIGNS MAY BE REQUIRED IF DEEMED NECESSARY BY THE ENGINEER. ADDITIONAL ITEMS TO BE PAID FOR AS A SUBSIDIARY COST OF THE CONTRACT.
705. NO DIRECT PAYMENT WILL BE MADE FOR REMOVING, RELOCATING, OR COVERING OF IN PLACE SIGNS, BARRELS, BARRICADES, OR OTHER TRAFFIC CONTROL DEVICES AS REQUIRED IN THIS TRAFFIC CONTROL PLAN (SEE SPECIAL DRAWING NO. TCD-100 IN THE ALABAMA DEPARTMENT OF TRANSPORTATION'S SPECIAL AND STANDARD HIGHWAY DRAWINGS, 2021 EDITION). COST TO BE A SUBSIDIARY OBLIGATION OF THE CONTRACT.
706. THE QUANTITIES SHOWN ON THE TRAFFIC CONTROL PLAN SHEET ARE CONSIDERED TO BE THE MINIMUM REQUIREMENT FOR HANDLING TRAFFIC AT ANY GIVE TIME DURING CONSTRUCTION.
707. THE CONTRACTOR IS TO REMOVE, RELOCATE, OR COVER DURING CONSTRUCTION AND THEN RESET UPON COMPLETION OF A PARTICULAR SECTION ANY CONFLICTING IN-PLACE ROADWAY SIGNS AS DIRECTED BY THE ENGINEER. COST TO BE A SUBSIDIARY OBLIGATION OF THE CONTRACT.
708. ALL CONSTRUCTION SIGNS PLACED BEFORE WORK BEGINS SHALL BE COVERED WITH BLACK PLASTIC OR SOME OTHER SUITABLE MATERIAL SO THAT THE SIGNS ARE NOT VISIBLE UNTIL WORK IS IN PROGRESS.
709. ALL TRAFFIC CONTROL DEVICES SHALL BE PAID AS A SUBSIDIARY COST OF THE CONTRACT.
710. ALL BLACK ON ORANGE CONSTRUCTION SIGNS SHALL BE FABRICATED USING TYPES IV OR VIII FLUORESCENT ORANGE REFLECTIVE SHEETING MATERIAL FOR THE SIGN BACKGROUND.
711. DURING NON-WORKING HOURS NO EQUIPMENT OR MATERIAL SHALL BE PARKED OR STORED CLOSER THAN 30 FEET TO THE EDGE OF ANY ROADWAY CARRYING TRAFFIC. WHEN THIS IS NOT PRACTICAL, IT SHALL BE PLACED IN AN AREA DESIGNATED BY THE ENGINEER AND DELINEATED BY REFLECTORIZED DRUMS. THIS INCLUDES STORAGE OF TRAFFIC CONTROL DEVICES SUCH AS TRAILER MOUNTED OR OTHER TEMPORARY SIGNS, BARRICADES, DRUMS, ETC., WHICH ARE NOT IN USE DURING NON-WORKING HOURS.



REFERENCE PROJECT NO	FISCAL YEAR	SHEET NO
SCP 59-923-21	2021	2J

**TRAFFIC CONTROL NOTES**  
**PROJECT NO. SCP 59-923-21**  
**SHELBY COUNTY**

- 712: WHERE THE LOCATION OF A REQUIRED SIGN FALLS IN A DRIVEWAY, SIDEWALK, BRIDGE, ETC., OR WHERE THE VISIBILITY OF A SIGN IS LIMITED TO THE TRAVELING PULBIC, THE LOCATIION SHALL BE ADJUSTED AS DIRECTED BY THE ENGINEER.
- 713: THE CONTRACTOR SHALL PLACE ALL ADVANCE WARNING SIGNS BEFORE PROCEEDING WITH THIS WORK.
- 714: ALL VEHICLES, EQUIPMENT, PERSONNEL (EXCEPT FLAGGERS), AND THEIR ACTIVITIES, ARE RESTRICTED AT ALL TIMES TO ONE SIDE OF THE PAVEMENT UNLESS OTHERWISE AUTHORIZED BY THE ENGINEER.
- 715: CONTRACTOR SHALL MAINTAIN AT LEAST ONE ACCESS TO BUSINESSES AND RESIDENCES DURING ALL PHASES OF CONSTRUCTION.
- 716: CONSTRUCTION SIGNS MOUNTED ON TEMPORARY SUPPORTS SHALL BE MOUNTED AT A MINIMUM HEIGHT OF 5 FEET.
- 717: FLAGGERS SHALL BE PROPERLY ATTIRED, EQUIPPED WITH STAFF MOUNTED STOP/SLOW PADDLES IN SIGHT OF EACH OTHER, OR HAVE DIRECT COMMUNICATIION AT ALL TIMES. FLAGGER STATION LOCATION MAY BE VARIED FROM THOSE SHOWN BASED ON ROADWAY CONDITIONS AT THE TIME OF THE LANE CLOSURE.
- 718: FLAGGERS ARE TO BE USED WHEN DIRECTED BY THE ENGINEER. SIGNS SHALL BE PLACED AT THE APPROPRIATE TIME, AND SHALL BE COVERED OR REMOVED WHEN FLAGGERS ARE NOT ON DUTY AND DURING NON-WORKING HOURS.
- 719: FOR MOVING OPERATIONS, THE TRAFFIC CONES MAY BE DELETED IF THE FLAGGERS ARE IN SIGHT OF EACH OTHER, OR IF A PILOT CAR IS USED ON A TWO LANE ROADWAY.

SUMMARY OF QUANTITIES  
SCP 59-923-21

[illegible]

UNIT DESCRIPTIONS  
COUNTY NAMED AND NUMBERED ROUTES[illegible]

SCP 59-923-21

REFERENCE PROJECT NO	PROJECT NAME	PROJECT TYPE	PROJECT STATUS	PROJECT START DATE	PROJECT END DATE	PROJECT BUDGET	PROJECT COST	PROJECT PROFIT	PROJECT RISK	PROJECT COMPLETION DATE	PROJECT COMPLETION RATE	PROJECT COMPLETION STATUS
1	Project A	Construction	Completed	2020-01-01	2020-06-30	\$1,000,000	\$800,000	\$200,000	Low	2020-06-30	100%	Completed
2	Project B	Software Development	In Progress	2020-07-01	2020-12-31	\$500,000	\$300,000	\$200,000	Medium	2020-12-31	75%	In Progress
3	Project C	Marketing Campaign	Planned	2021-01-01	2021-03-31	\$200,000	\$150,000	\$50,000	Low	2021-03-31	0%	Planned
4	Project D	Research & Development	On Hold	2020-01-01	2020-06-30	\$300,000	\$250,000	\$50,000	High	2020-06-30	0%	On Hold
5	Project E	Infrastructure Upgrade	Completed	2020-07-01	2020-12-31	\$750,000	\$600,000	\$150,000	Medium	2020-12-31	100%	Completed
6	Project F	Product Launch	In Progress	2021-01-01	2021-06-30	\$400,000	\$250,000	\$150,000	Medium	2021-06-30	50%	In Progress
7	Project G	System Integration	Planned	2021-07-01	2021-12-31	\$600,000	\$450,000	\$150,000	Medium	2021-12-31	0%	Planned
8	Project H	Customer Service Improvement	On Hold	2020-07-01	2020-12-31	\$150,000	\$120,000	\$30,000	Low	2020-12-31	0%	On Hold
9	Project I	Website Redesign	Completed	2020-01-01	2020-03-31	\$100,000	\$80,000	\$20,000	Low	2020-03-31	100%	Completed
10	Project J	Mobile App Development	In Progress	2020-04-01	2020-09-30	\$250,000	\$180,000	\$70,000	Medium	2020-09-30	80%	In Progress
11	Project K	Cloud Migration	Planned	2021-01-01	2021-06-30	\$350,000	\$280,000	\$70,000	Medium	2021-06-30	0%	Planned
12	Project L	Supply Chain Optimization	On Hold	2020-07-01	2020-12-31	\$200,000	\$160,000	\$40,000	Medium	2020-12-31	0%	On Hold
13	Project M	HR System Upgrade	Completed	2020-01-01	2020-06-30	\$180,000	\$140,000	\$40,000	Low	2020-06-30	100%	Completed
14	Project N	IT Security Audit	In Progress	2020-07-01	2020-12-31	\$120,000	\$90,000	\$30,000	Low	2020-12-31	60%	In Progress
15	Project O	Legal Compliance Review	Planned	2021-01-01	2021-03-31	\$80,000	\$60,000	\$20,000	Low	2021-03-31	0%	Planned
16	Project P	Facility Renovation	On Hold	2020-07-01	2020-12-31	\$220,000	\$180,000	\$40,000	Medium	2020-12-31	0%	On Hold
17	Project Q	Product Feature Development	Completed	2020-01-01	2020-06-30	\$160,000	\$120,000	\$40,000	Medium	2020-06-30	100%	Completed
18	Project R	Customer Feedback Analysis	In Progress	2020-07-01	2020-12-31	\$90,000	\$70,000	\$20,000	Low	2020-12-31	70%	In Progress
19	Project S	Supply Chain Diversification	Planned	2021-01-01	2021-06-30	\$280,000	\$220,000	\$60,000	Medium	2021-06-30	0%	Planned
20	Project T	IT Infrastructure Upgrade	On Hold	2020-07-01	2020-12-31	\$320,000	\$260,000	\$60,000	Medium	2020-12-31	0%	On Hold
21	Project U	Product Line Extension	Completed	2020-01-01	2020-06-30	\$140,000	\$110,000	\$30,000	Medium	2020-06-30	100%	Completed
22	Project V	Customer Service Training	In Progress	2020-07-01	2020-12-31	\$70,000	\$50,000	\$20,000	Low	2020-12-31	85%	In Progress
23	Project W	Website Performance Optimization	Planned	2021-01-01	2021-03-31	\$60,000	\$45,000	\$15,000	Low	2021-03-31	0%	Planned
24	Project X	Supply Chain Automation	On Hold	2020-07-01	2020-12-31	\$260,000	\$210,000	\$50,000	Medium	2020-12-31	0%	On Hold
25	Project Y	Product Packaging Redesign	Completed	2020-01-01	2020-06-30	\$110,000	\$85,000	\$25,000	Low	2020-06-30	100%	Completed
26	Project Z	Customer Service Automation	In Progress	2020-07-01	2020-12-31	\$130,000	\$100,000	\$30,000	Medium	2020-12-31	75%	In Progress
27	Project AA	Supply Chain Risk Assessment	Planned	2021-01-01	2021-03-31	\$90,000	\$70,000	\$20,000	Low	2021-03-31		

2021

FISCAL YEAR

3A

SHEET NO

PROJECT NOTES:

UNIT DISCRIPTIONS  
COUNTY SUBDIVISION STREETS

[illegible]

SCP 59-923-21

REFERENCE PROJECT NO
----------------------

2021

FISCAL YEAR

3B

**SHEET NO**

# UNIT DESCRIPTIONS

## UNITS PAID FOR BY OTHERS (CITIES)

UNIT	CITY OR OTHERS	DESCRIPTION	LENGTH	WIDTH	COMMENT
	<b>STREET NAME/AREA</b>				
	<b>City of Columbiana</b>				
C1	Main Street	Between joint at Water works North to SR-25	4692	22-40	Mill full width, Patch, Spot Level, Seal 165# of 1/2" Mix, Restripe
C2	Mildred Street	East off Main Street to Arlington Street	2482	23	Mill full width, Patch, Spot Level, Seal 165# of 1/2" Mix
	<b>City of Vincent</b>				
V1	Southern Street	Cutthrough between US-231 and SR-25	1260	18	Patch, Seal 165# of 3/4" Mix
V2	McBrayer Drive	East off SR-25 North of US-231	3900	14	Seal 165# of 3/4" Mix
V3	Cotton Circle	Back section of The Willows off CR-83 North of CR-62	745	18	Mill designated area, Patch
	<b>Hanna Farms</b>				
V4	Hanna Drive	North of CR-60 East of US-231	2990	22	Patch, Seal 165# of 3/4" Mix
V5	Goodwin Creek	West off end of Hanna Drive	325	22	Patch, Seal 165# of 3/4" Mix
V6	Acton Road	West off Hanna Drive	1060	22	Patch, Seal 165# of 3/4" Mix
V7	Tyler Circle	South off Acton Road	650	22	Patch, Seal 165# of 3/4" Mix
V8	Whitney Circle	North off Acton Road	470	22	Patch, Seal 165# of 3/4" Mix
	<b>City of Westover</b>				
W1	Bryan Road	Cutthrough between US-280 and CR-280, East of CR-55	1175	14	Patch over pipe, Spot Level 185# 3/4" mix
W2	Rosewood Drive	West off CR-55 1 mile North of CR-280	1192	14	Clip shoulders then pave as is 14' wide with 225# 3/4" mix

SCP 59-923-21

REFERENCE PROJECT NO

2021

FISCAL YEAR

3C

SHEET NO

# SUMMARY OF QUANTITIES

REQUIRED ASPHALT RESURFACING												
CONTRACT UNIT		206C-010 REMOVING CONCRETE DRIVEWAY	327D-021 BIT. BASE (WIDENING) MIX 2	401B-111 BITUMINOUS SURFACE TREATMENT TYPE "G". CRS-2 (WITH POLYMER ADDITIVE)	405A-000 TACK COAT	408A-052 PLANING EXISTING PAVEMENT (2" DEPTH)	410H-000 MATERIAL REMIXING DEVICE	424A-340 BITUMINOUS WEARING SURFACE 1 1/2" MAX AGG ESAL A/B	424A-361 BITUMINOUS WEARING SURFACE 3/4" MAX AGG ESAL C/D	424A-370 BITUMINOUS WEARING SURFACE (WIDENING) 3/4" MAX AGG ESAL C/D	424B-656 BITUMINOUS UPPER BINDER LAYER (PATCHING) 1 1/2" MAX AGG ESAL C/D	424B-658 BITUMINOUS UPPER BINDER LAYER (LEVELING) 3/4" MAX AGG ESAL C/D
		SOYD	TON	SOYD	GAL	SOYD	EACH	TON	TON	TON	TON	TON
1	CR-47	12	460	133000	1200		1		12302	650	1070	500
2	CR-47 South			44998	100		1		4162		150	250
3	Ridge Road			4560	50				422			100
4	Waxahatchee Circle			4828	50				447			50
5	Lay Port Loop			1600	50				148			50
6	Waxahatchee Road			2142	50				198			50
7	Waxahatchee Lane			1643	50				152			50
8	CR-72			9360	200				866	40	100	100
9	CR-16			17400	200		1		1610			100
10	CR-16			43200	100		1		4100	168	1100	1000
11	Reed Creek Road			14728	100				1362	60	50	100
12	CR-80			23467	250		1		2371	200		200
13	CR-56			28570	100		1		2650	50	240	640
14	CR-443			9500	100				880		100	200
15	Griffin Road			12000	100				1110		100	200
16	CR-78			37156	40		1		3437	60	185	600
17	CR-361			12350	250				1145	26	50	200
18	CR-275				500	10847	1		1010	130	200	250
19	Amanda Lane			6960	25				650		50	100
20	Lilly Lane			622					60			25

NOTE: UNLESS OTHERWISE NOTED IN THIS PLAN SET OR DIRECTED BY THE PROJECT ENGINEER, PLACEMENT RATES FOR PATCHING AREAS SHALL BE 440#/SY AND LEVELING SHALL BE 165#/SY

COUNTY PROJECT NUMBER

SCP 59-923-21

FISCAL YEAR

2021

SHEET NO

3D

# SUMMARY OF QUANTITIES

REQUIRED ASPHALT RESURFACING												
CONTRACT UNIT		206C-010 REMOVING CONCRETE DRIVEWAY	327D-021 BIT. BASE (WIDENING) MIX 2	401B-111 BITUMINOUS SURFACE TREATMENT TYPE "G", CRS-2 (WITH POLYMER ADDITIVE)	405A-000 TACK COAT	408A-052 PLANING EXISTING PAVEMENT (2" DEPTH)	410H-000 MATERIAL REMIXING DEVICE	424A-340 BITUMINOUS WEARING SURFACE 1½" MAX AGG ESAL A/B	424A-361 BITUMINOUS WEARING SURFACE ¾" MAX AGG ESAL C/D	424A-370 BITUMINOUS WEARING SURFACE (WIDENING) ¾" MAX AGG ESAL C/D	424B-656 BITUMINOUS UPPER BINDER LAYER (PATCHING) 1½" MAX AGG ESAL C/D	424B-658 BITUMINOUS UPPER BINDER LAYER (LEVELING) ¾" MAX AGG ESAL C/D
		SOYD	TON	SOYD	GAL	SOYD	EACH	TON	TON	TON	TON	TON
21	Lake Wellington Estates			3856	50			241			33	75
22	Lake Drive				350				836		10	20
23	Primrose Lane				175				496		10	20
24	Swallow Lane				100				240		10	20
25	Blue Bird Lane				100				222		10	20
26	Mostellers Lane				300				825		20	30
27	Mostellers Drive				350				995		20	30
28	Mostellers Circle				50				140		10	20
29	Bass Lane				50				130		10	20

NOTE: UNLESS OTHERWISE NOTED IN THIS PLAN SET OR DIRECTED BY THE PROJECT ENGINEER, PLACEMENT RATES FOR PATCHING AREAS SHALL BE 440#/SY AND LEVELING SHALL BE 165#/SY

PROJECT NOTES:

## SUMMARY OF QUANTITIES

REQUIRED ASPHALT RESURFACING FOR CITY STREETS									
CONTRACT UNIT		405A-000 TACK COAT	408A-052 PLANING EXISTING PAVEMENT (2" DEPTH)	424A-340 BITUMINOUS WEARING SURFACE 1 1/2" MAX AGG ESAL A/B	424A-361 BITUMINOUS WEARING SURFACE 3/4" MAX AGG ESAL C/D	424A-370 BITUMINOUS WEARING SURFACE (WIDENING) 3/4" MAX AGG ESAL C/D	424B-651 BITUMINOUS UPPER BINDER LAYER 1" MAX AGG ESAL C/D	424B-656 BITUMINOUS UPPER BINDER LAYER (PATCHING) 1 1/2" MAX AGG ESAL C/D	424B-658 BITUMINOUS UPPER BINDER LAYER (LEVELING) 3/4" MAX AGG ESAL C/D
		GAL	SOYD	TON	TON	TON	TON	TON	TON
City of Columbiana									
C1	Main Street	825	16492	1361		160		150	50
C2	Mildred Street	225	6342	523		30		50	75
City of Vincent									25
V1	Southern Street	63			210				
V2	McBrayer Drive	169			558				
V3	Cotton Circle	37			150		180		
	Hanna Farms								
V4	Hanna Drive	388		640					24
V5	Goodwin Creek	62		103					
V6	Acton Road	134		222					30
V7	Tyler Circle	111		184					24
V8	Whitney Circle	88		146					24
City of Westover									
W1	Bryan Road	91			169			83	100
W2	Rosewood Drive				209				
Totals		2193	22834	3179	1296	190	180	283	352

NOTE: UNLESS OTHERWISE NOTED IN THIS PLAN SET OR DIRECTED BY THE PROJECT ENGINEER, PLACEMENT RATES FOR PATCHING AREAS SHALL BE 440#/SY AND LEVELING SHALL BE 165#/SY

COUNTY PROJECT NUMBER  
SCP 59-923-21FISCAL YEAR  
2021SHEET NO  
3F



## SUMMARY OF QUANTITIES STRIPING

[illegible]

REFERENCE PROJECT NO  
SCP 59-923-21

FISCAL YEAR  
2021

SHEET NO  
36

REFERENCE PROJECT NO	FISCAL YEAR	SHEET NO
SCP 59-923-21	2021	3H

		TRAFFIC CONTROL MARKINGS. CLASS 2. TYPE A	TRAFFIC CONTROL LEGENDS. CLASS 2. TYPE A	TEMPORARY TRAFFIC CONTROL MARKINGS (PAINT)	PAVEMENT MARKERS. CLASS A-H. TYPE 2-C	PAVEMENT MARKERS. CLASS A-H. TYPE 1-B	PAVEMENT MARKERS. CLASS A-H. TYPE 2-D	PAVEMENT MARKERS. CLASS A-H. TYPE 2-E
UNIT #	COUNTY ROAD # OR STREET	SQ.FT.	SQ.FT.	SQ.FT.	EACH	EACH	EACH	EACH
		703A-002	703B-002	703D-002	705A-030	705A-032	705A-037	705A-038
1	CR-47	1975		3950		60	1800	
2	CR-47	250		250			450	
3	Ridge Road							
4	Waxahatchee Circle							
5	Lay Port Loop							
6	Waxahatchee Road							
7	Waxahatchee Lane							
8	CR-72	136		135		16	105	
9	CR-16	60		60		116	132	
10	CR-16	995	45	408	10		462	116
11	Reed Creek Road	24		24			166	
12	CR-80	264	112	264	22		240	
13	CR-56	72		72			357	
14	CR-443	60						
15	Griffin Road	48		48			150	
16	CR-78	110		110			380	
17	CR-361	62		104			140	
18	CR-275	3522	187	2000	31	238	4444	140
19	Amanda Lane	40		40				
20	Lilly Lane	20		20				
	TOTAL	7638	344	7485	63	480	4426	256

[illegible]

**SHEET NO**  
**3-1**

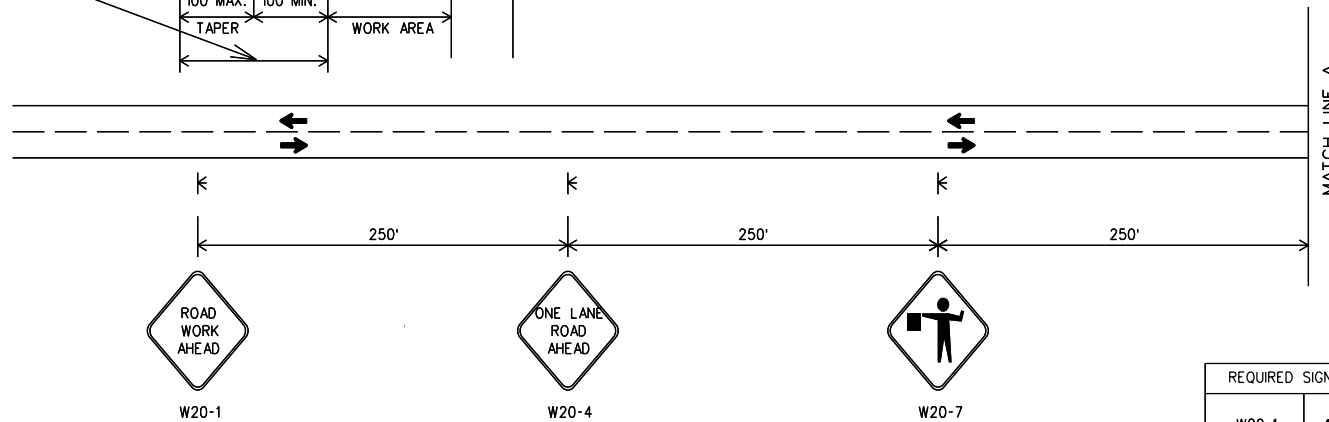
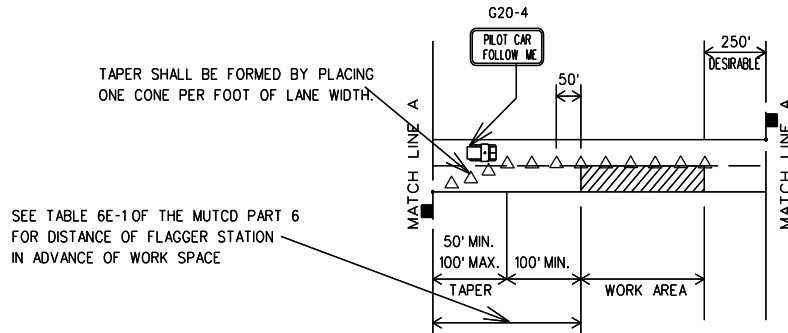
# TRAFFIC CONTROL PLAN SHEET

REFERENCE PROJECT NO  
SCP 59-923-21

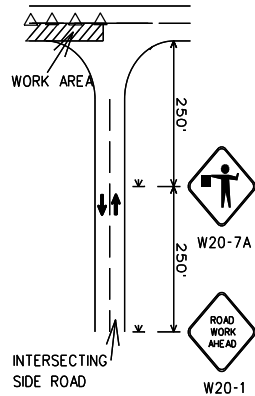
FISCAL YEAR  
2021

SHEET NO  
4

TWO LANE HIGHWAY, ONE LANE CLOSURE



REQUIRED SIGN SIZES	
W20-1	48" X 48"
W20-4	48" X 48"
W20-7	48" X 48"
G20-4	36" X 18"



## TRAFFIC CONTROL FOR INTERSECTING SIDE ROADS WITHIN WORK AREA

NOTE: THE W20-1 AND W20-7A SIGNS TO BE USED ON INTERSECTING ROADS SHALL BE 36"X36" IN SIZE. THE TEMPORARY MOUNTED W20-1 ROAD WORK AHEAD SIGN SHOWN ON THE SIDE ROAD WILL NOT BE REQUIRED IF ONE IS ALREADY POST MOUNTED ON THE SIDE STREET.

- LEGEND
- TEMPORARY MOUNTED SIGN
  - POST MOUNTED SIGN
  - CONE WITH BALAST
  - FLAGGER

DESIGN BUREAU SPECIAL DRAWING  
DETAILS FOR TRAFFIC CONTROL FOR  
RESURFACING TWO LANE HIGHWAYS

DRAWN BY:  
DATE DRAWN:

SPECIAL PROJECT DETAIL INDEX NO  
2021

SHEET TITLE ROUTE  
VARIOUS

NOT TO SCALE